

CERTIFICATE OF LOCATION OF GOVERNMENT CORNER

NORTHEAST Corner of Section 33, Township 105N, Range 42W

5th Principal Meridian, State of Minnesota, County of Murray.

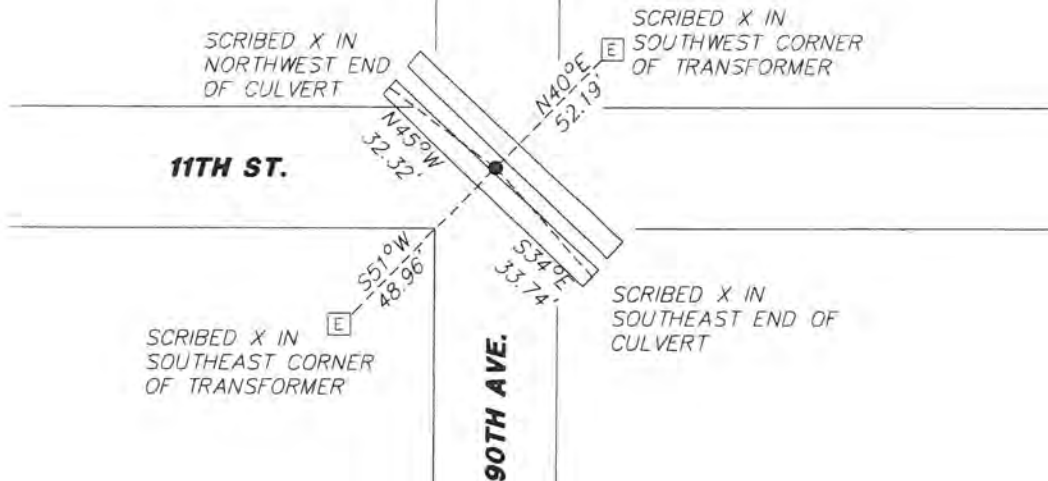
At the corner location shown on the sketch:

On 05/16/19 found a capped rebar stamped "Johnson LS 50343" down 0.2'
DATE

left monument as found lowered monument removed monument (explain)

On placed a
DATE

SKETCH OF REFERENCE TIES



N.T.S.

Statement of evidence for this corner location is on back of this page.

I hereby certify that this document was researched and prepared by me or under my direct supervision and that I am a licensed Land Surveyor under the laws of the State of Minnesota.

Signature *[Handwritten Signature]*

Date 6/27/19 License No. 49563

Title:

- Land Surveyor Professional Engineer
 County Surveyor County Engineer

OFFICE OF THE COUNTY RECORDER

County of Murray

I hereby certify that this document was filed in the Co.

Recorder's office at 9:00 A.M. on the 8th day of July A.D. 20 19

County Recorder *[Handwritten Signature: Evelyn C. Larson]*
by , Deputy

DOCUMENT NO.

Statement of Evidence:

Northeast corner of Section 33, Township 105 North, Range 42 West, 5th Principal Meridian, Murray County, Minnesota.

1902 Murray County, located stones in grade and placed an iron pin. Measured 2640' to WQ of section 34. Measured 2660' to NQ of 33.

2006 Westwood Professional Services placed a 1/2" pipe with LS 42606 cap, 0.4' down. Set 4 ties.

2019 Westwood Professional Services searched area and found a capped rebar stamped "Johnson LS50343" down 0.2'. Monument fits distance to 4/4 ties from 2006 corner record.

Analysis of the recovered data, field evidence and survey measurements, indicates that the monument found is the correct perpetuation of this corner. For additional information concerning this corner please contact Westwood Professional Services.

